



1908 MCLAUGHLIN-BUICK "MODEL F"

*Courtesy of the Canadian Automotive
Museum, Oshawa Ontario*

Nathaniel D. Seaman, a Sauble Falls lumber yard operator purchased a 1908 McLaughlin-Buick Model F; one of only 154 such automobiles in its first year of production. The car was passed down through his family and was still in working condition almost 30 years later. In 1937, Theodore Seaman contacted General Motors to see if they had any interest in acquiring it again. Colonel Sam McLaughlin, President of the McLaughlin Motor Car Company dispatched a representative to inspect the car and traded the Seamans a new 1937 Chevrolet to reacquire it. The restored car has held an honoured place in General Motors of Canada history and has been used for public events, exhibitions and displays. Both the vehicle and the research involved in its restoration make the F108 an invaluable resource for other restorers as well as students of automotive history.



Partners and Sponsors

- Ontario Parks
- Bruce County Museum & Cultural Centre
- Henderson Paddon
- Bridge Excavating
- Echo Graphics

The Sauble Falls Historic Site is located on the west side of Sauble Falls Pkwy. north of Sauble Beach.

The Sauble Falls Historic Site Committee worked diligently to research, interpret, design and erect signs for the Sauble Falls Historic Site. The Ontario Parks employees cleared brush, installed pathways and placed the interpretive signs. Historic Designation took place June 9, 2007.

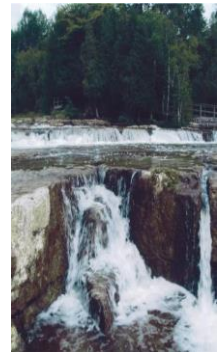
Special Thanks

Sauble Falls Historic Site Committee Members: John Carter, Kevin Deacon, Bill Johnston, Orma Lyttle, David Matches, Linda Russell, Adelle Siegrist, Pat Varley

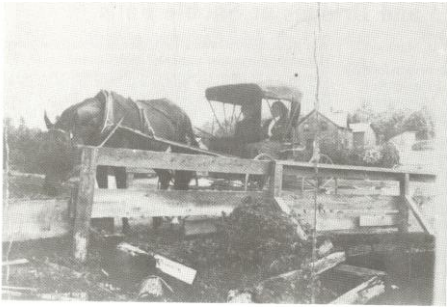
- Gordon Thede

PRINT VERSION-July 2019

SAUBLE FALLS HISTORIC SITE



The Bridge



The reinforced concrete and steel bridge was constructed by Theodore Seaman in 1930. The bridge replaced a wooden bridge built over the head race and a wire foot bridge with a wooden plank deck which swung over the falls.

The Hydro Electric Plant

The hydro electric plant was constructed in 1905. Operating as the Sauble Falls Light & Power Co., John C Thede, Robert Miller and Rev. L Wittich partnered to supply power from the north side of Sauble Falls to the Town of Warton. A round concrete raceway fed water from the race pond to the powerhouse turbines. The turbines discharged the water into the lower river



The Sawmill

Built in the late 1800's, the mill operations consisted of a planing mill, shingle mill and small grist mill. Logs for the mill were floated down the river into the race pond. A rectangular concrete raceway fed water from the race pond to operate the mill turbines. Logs were prevented from going over the falls by a boom across the river above the dam. Tugboats, wagons and trucks were used to transport lumber. The mill was destroyed by fire in 1937.

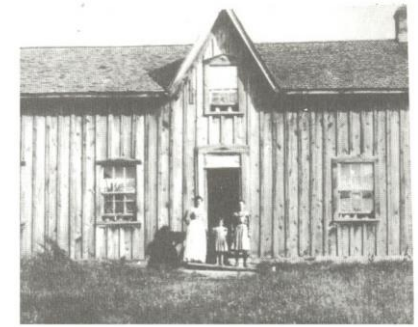


The School



Sauble Falls School (SS No 11) was built in 1880 on one acre of land donated by James Wilson. The school was used for old time dance parties, Christmas concerts and daily school lessons. The school closed in 1949.

The Homes



Two large boarding houses accommodated 20 mill hands and were operated by each mill owner in turn.

Homes in the Sauble Falls vicinity included that of the Power Company Engineer and his family, owners and operators of the mill and their families, schoolteacher, postmaster, and storekeepers. The home belonging to bridge builder Theodore Seaman is the only remaining residence and now houses the Ontario Parks Office.

The Post Office and General Store

In 1880, 20 families received mail from the local post office. The general store provided supplies to the residents of the area.

