



County of Bruce  
Planning & Development Department  
268 Berford Street, PO Box 129  
Wiarton, ON N0H 2T0  
brucecounty.on.ca  
226-909-5515



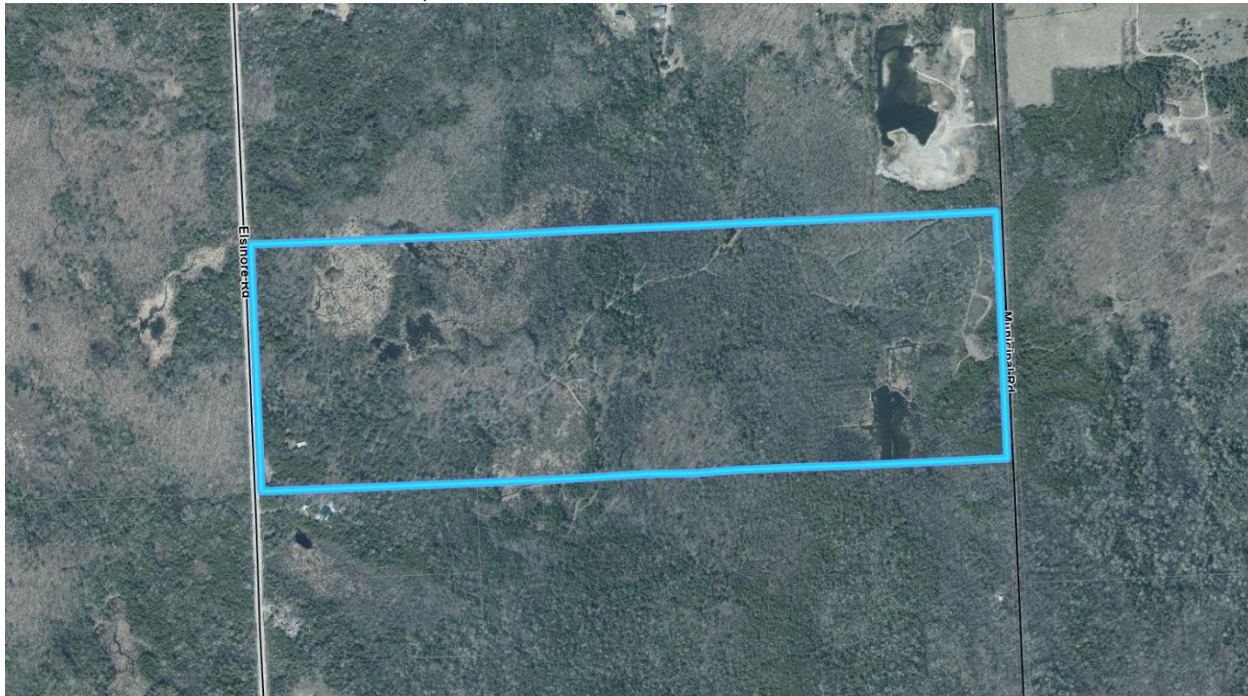
September 12, 2025

File Number: L-2025-014

## Public Meeting Notice

**You're invited to a Public Meeting to consider  
Local Official Plan Amendment File No. L-2025-014  
October 21, 2025 at 9:00 am**

A change is proposed in your neighbourhood: This application proposes to sever three 0.62 hectare (1.53 acre) lots, each with a frontage of 51.21 m on Elsinore Road. The retained parcel will have an area of 47.54 hectares with a frontage of 254.80 m on Elsinore Road. The severed lots will be developed for residential use, while the retained parcel will remain unchanged with the possibility of a residential development in the future. This application also proposes to amend Section 8.5.4 of the Town's Official Plan to permit the creation of the three lots. The related Consent files are B-2025-067, B-2025-068 and B-2025-069.



922 Elsinore Road, CON C LOT 19 (Amabel)  
Town of South Bruce Peninsula, Roll Number: 410254000325800

## Learn more

Additional information about the application is available online at <https://www.brucecounty.on.ca/active-planning-applications>. Information can also be viewed in person at the County of Bruce Planning Office noted above, between 8:30 a.m. and 4:30 p.m. (Monday to Friday). The Planner on the file is Megan Stansfield.

## Have your say

Comments and opinions submitted on these matters, including the originator's name and address, become part of the public record, may be viewed by the general public and may be published in a Planning Report and Council Agenda. Comments received after **October 8, 2025** may not be included in the Planning Report but will be considered if received prior to a decision being made, and included in the official record on file.

**Before the meeting:** You can submit comments by email [bcplwi@brucecounty.on.ca](mailto:bcplwi@brucecounty.on.ca), mail, or phone (226-909-5515) if you have any questions, concerns or objections about the application. Comments will be provided to the Council for its consideration.

**On the day of and during the Public Meeting** you can attend the Public Meeting in person at the Council Chambers and speak directly to council.

## How to access the public meeting

The public meeting will be held in person, in the municipal Council Chambers located at 315 George Street, Wiarton, ON, N0H 2T0. Seating may be limited – you may be required to wait outside until called upon to speak. As an alternative, you may submit written comments to the Bruce County Planning Department which will be considered at the meeting.

Please contact the Town at [suzy.richardson@southbrucepeninsula.com](mailto:suzy.richardson@southbrucepeninsula.com) or 519-534-1400 ext 147 if you have any questions regarding how to participate in the meeting.

## Stay in the loop

If you'd like to be notified of the decision of the approval authority on the proposed application(s), you must make a written request to the Bruce County Planning Department.

## Notice to Landlords

If you are a landlord of lands containing seven (7) or more residential units, please post a copy of this notice in a location that is visible to all the residents.

## Know your rights

Section 17(36) of the [Planning Act](#) outlines rights of appeal for Official Plan Amendment applications.

If a person or public body would otherwise have an ability to appeal the decision of the County of Bruce to the Ontario Land Tribunal but the person or public body does not make oral submissions at a public meeting or make written submissions to the Town of South Bruce

Peninsula before the proposed official plan (or official plan amendment) is adopted, the person or public body is not entitled to appeal the decision.

If a person or public body does not make oral submissions at a public meeting or make written submissions to the Town of South Bruce Peninsula before the proposed official plan (or official plan amendment) is adopted, the person or public body may not be added as a party to the hearing of an appeal before the Ontario Land Tribunal unless, in the opinion of the Tribunal, there are reasonable grounds to add the person or public body as a party.

**Please note that third parties (anyone who is not a specified person or public body) do not have the right to appeal a decision to the Ontario Land Tribunal.**

For more information please visit the Ontario Land Tribunal website at <https://olt.gov.on.ca/appeals-process/>.

