



# Town Of South Bruce Peninsula

## Municipal Class Environmental Assessment Upgrades To The Sanitary Collection System Serving The Community Of Wiarton

### Notice Of Study Commencement

#### The Project:

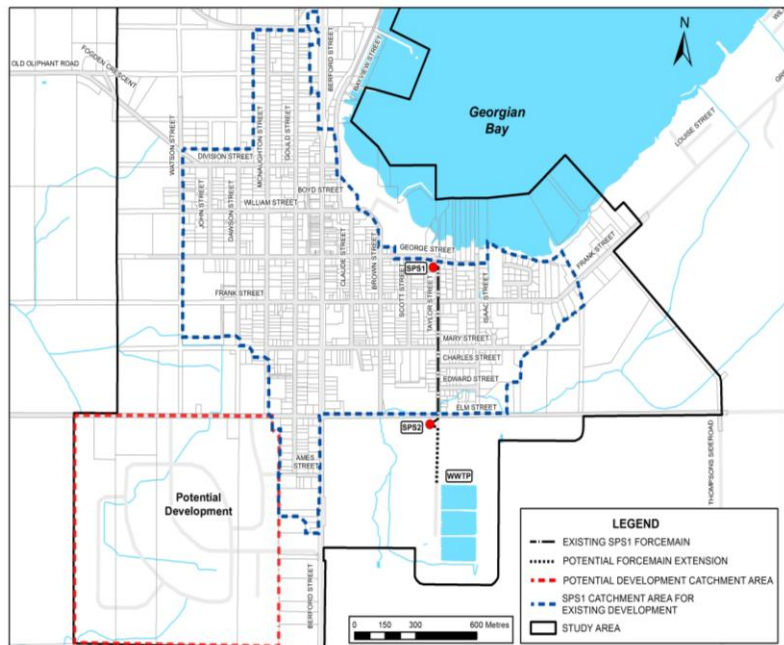
The Town of South Bruce Peninsula is planning to complete upgrades to the sanitary sewage collection system serving the Community of Wiarton. Several issues associated with the sewage collection system will be addressed through the Class EA process. 1) The existing collection system has experienced occasional high flow events which can result in by-passes at Sewage Pumping Station (SPS) #1, located near the intersection of George Street and Taylor Street in Wiarton. 2) A sanitary outlet is required to service a proposed residential development located in the southwest portion of Wiarton. A number of potential alternatives will be examined to address the two issues, including i) construction of a new SPS at various locations within the community, ii) increase pumping capacity at the existing sewage pumping stations, or iii) create additional on-site storage at SPS #1.

#### The Environmental Screening Process:

The planning for this project is following the environmental screening process set out for Schedule B activities under the Municipal Class Environmental Assessment (Class EA). The purpose of the Class EA screening process is to identify any potential environmental impacts associated with the proposed works and to plan for appropriate mitigation of any identified impacts. The process includes consultation with the public, stakeholders, Aboriginal Communities and review agencies. This notice is being issued to advise of the start of study investigations. There will be additional opportunities for public input and involvement as the study progresses.

#### Public Involvement:

The consultation program for this Class EA includes several opportunities for public involvement. For the initial phase of the program, public input into the planning and design of this project will be received until **November 18<sup>th</sup>, 2016**. Additional opportunities for comment will be provided as the process proceeds. Any comments collected in conjunction with this Class EA will be maintained on file for use during the project and may be included in project documentation. With the exception of personal information, all comments will become part of the public record.



For further information on this project, or to review the Class EA process, please contact the project engineers: B.M. Ross and Associates, 62 North Street, Goderich, Ontario, N7A 2T4. Telephone 1 (888) 524-2641, Fax (519) 524-4403. Kelly Vader, Environmental Planner; (e-mail: kvader@bmross.net).

This Notice issued October 19<sup>th</sup>, 2016.

Andrew Sprunt, Manager of Public Works  
Town of South Bruce Peninsula