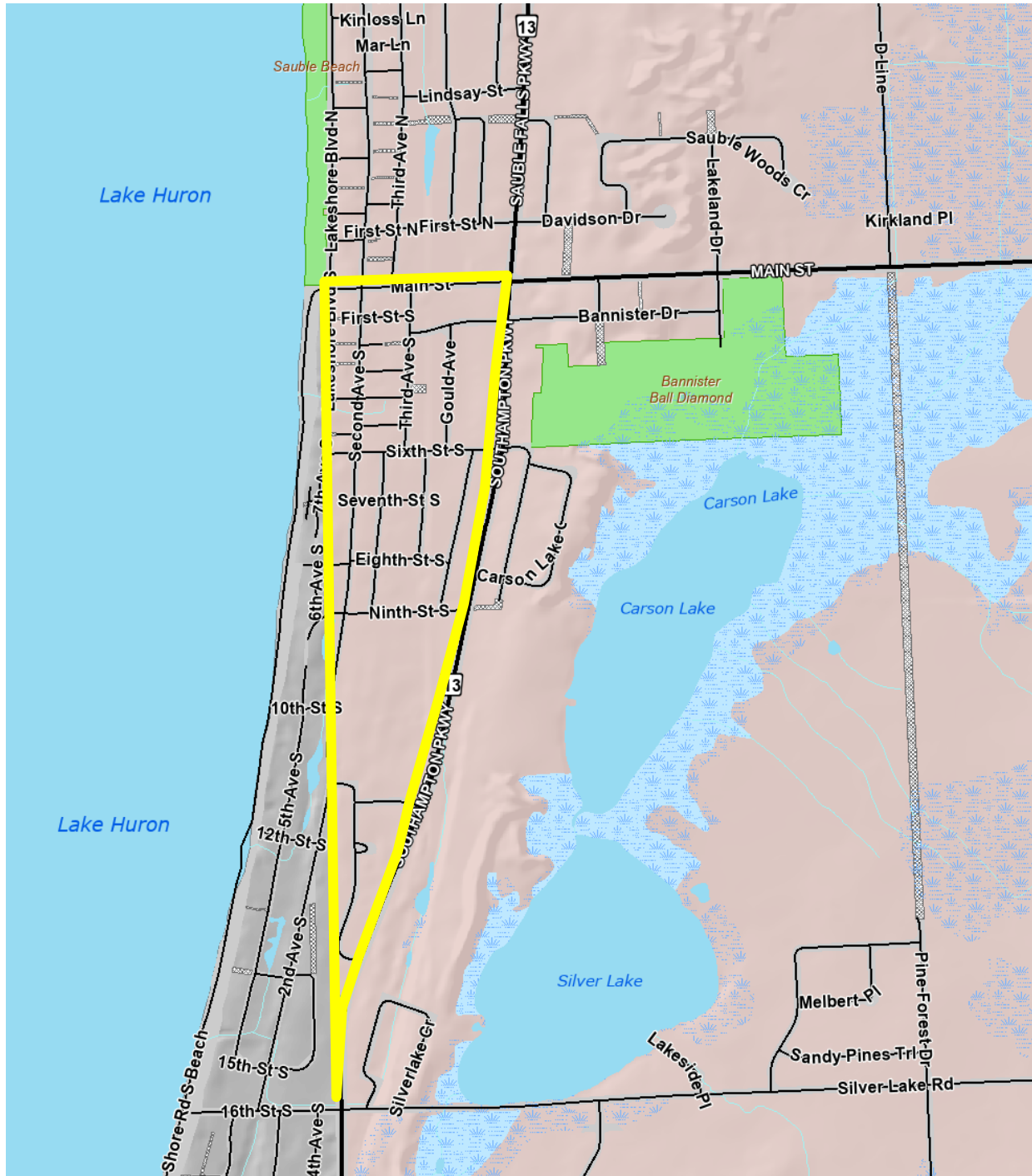


# Town of South Bruce Peninsula Roadside Tree Maintenance Program

Beginning April 11, 2022



The work along the roadsides will include the removal of hazardous vegetation including low hanging branches, shrubs and dead, diseased, or hazardous trees.

Larger wood material will be left safely on the roadside for approximately one week; residents are welcome to take the material, and anything left after the one-week period will be removed by Public Works crews.

Maps of tree brushing locations will be posted on the Town's [website](#) two weeks prior to work commencing.

The Town's Tree and Brush Maintenance Policy can be found on the Town's [website](#).